



KAIZER

BEYOND THE TECHNOLOGY

KAIZER

BEYOND THE TECHNOLOGY

C/ Dante Alighieri, 121 2º 2ª
08032, Barcelona

comercial@iffservice.com

www.iffservice.com

+34 930 116 062





KAIZER, a machine ambitiously conceived to be the most charismatic king of the kings:

A creation beyond the conventional systems; A joyful work environment with superior and ergonomic design; Precise and fast performance; A system trustable at any time. An incomparable edging solution.

The KAIZER will honor your business; with its appearance and performance.



KAIZER HAB-8000

Effective multi-tasked auto blocking.

- Automatic recognition and display of all types of lenses on the screen by 1:1 ratio.
- Real time information transmission to the edging body.



KAIZER HPE-8000

All the latest trends in handling the beveling and milling functions!

- Integrated, robust and fast milling function that avoids any axis twisting.
- Asymmetric and customizable beveling for high curved goggles.
- Easy graphic interface (GUI)
- 10.4" 1024x768 high resolution LCD

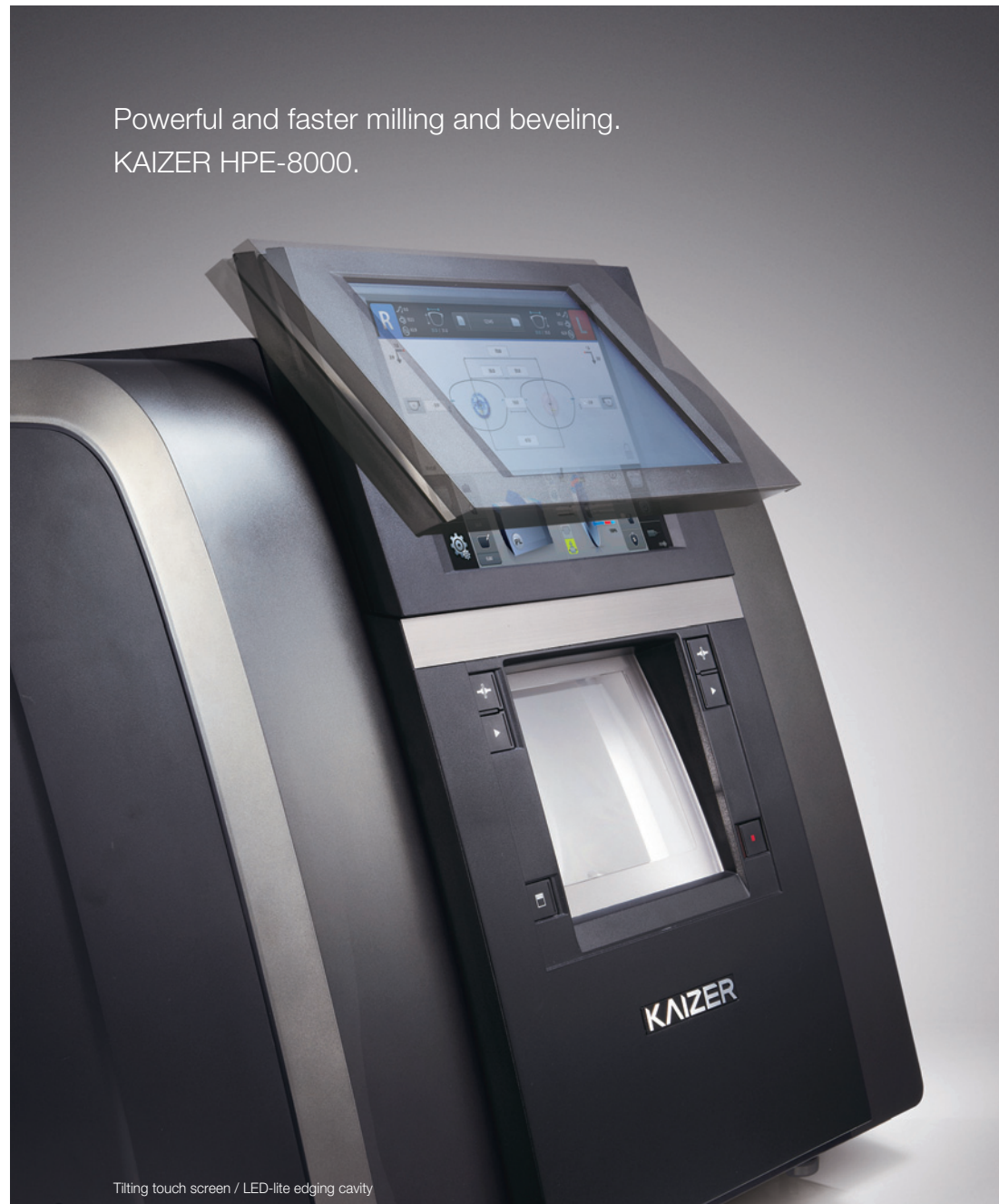


KAIZER HDM-8000

Faster drilling!

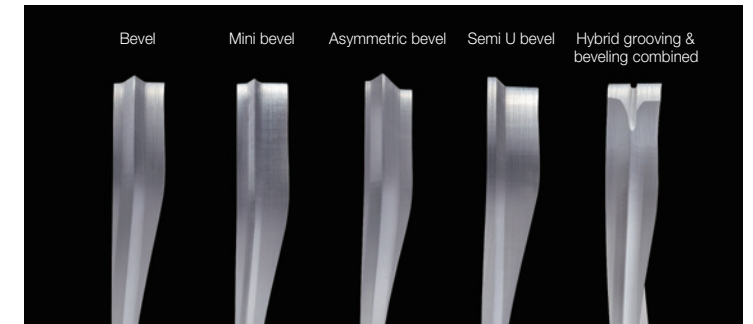
- Take care of numerous tasks simultaneously by Smart job manager.
- You can process and cut your next lens while the drilling job is in process.

Powerful and faster milling and beveling.
KAIZER HPE-8000.



Tilting touch screen / LED-lite edging cavity

Premium edger with high-end digital technology and precision that guarantee the faster speed and convenience with very easy-to-follow menu screens.



Customizing bevel / grooving



Asymmetric bevel

More innovative and faster milling!

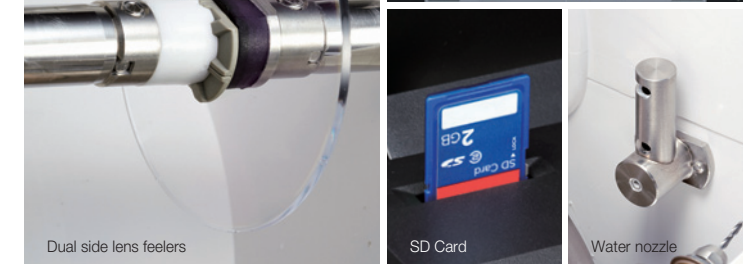
- Precise milling function for PC, high index and plastic lens. (Glass optional)
- A perfect and definitive solution that prevents axis twisting of special hydrophobic lenses.

Diverse beveling options!

- Mini-beveling for extremely small bevel frames
- Asymmetric, semi-U beveling for high curve goggle frames
- Partial grooving, for premium design frames.
- Hybrid grooving to combine grooved and beveled area in one lens for extremely fashionable and trendy frames.

Clear and precise touch screen

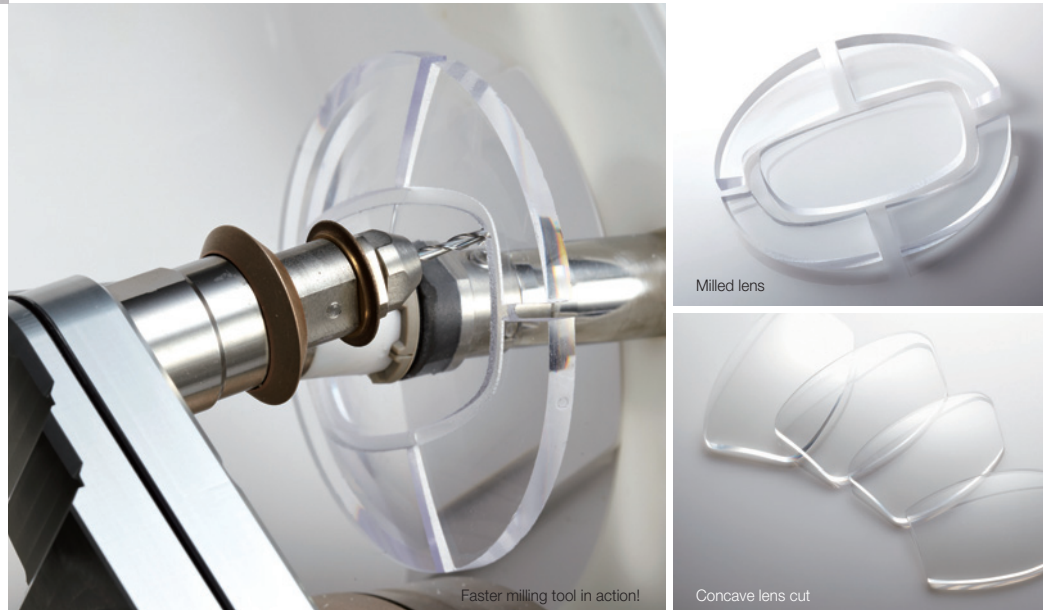
- Beveled and grooved area simulation function before processing to determine their exact positions.



Dual side lens feelers

SD Card

Water nozzle



Faster milling tool in action!

Milled lens

Concave lens cut

Enhanced power performance

- Powerful and durable direct-drive wheel motor.
- Faster lens processing by implementing strong servomotor providing 1-horsepower.
- 50% faster lens feeling process by using dual lens feelers simultaneously from the front and back sides.
- Faster data processing by high-performance 1GHz CPU.
- Grooving / Beveling position and width can be adjusted by 0.01 mm steps offering incomparable precision.

The KAIZER HAB-8000, Full automation by simply pressing the start button.



All in one! Tracer, Lensmeter and Auto Blocker! With tilting touch screen display

Frame reading, lens centering and blocking are performed automatically by placing the lens.
Maximize the efficiency by advanced digital and optical technology and user-friendly Interface.

Save time with the efficient digital scanning and hole detection of KAIZER!

- By simply placing the lens in the blocking center, the lens is displayed on screen by 1:1 ratio in real-time and size.
- Tracing and hole editing time can be saved dramatically by real-time simulated lens and hole detection function!
- Traced frame data, FPD, frame diameter and other key changes are transmitted to the edger in real-time.

Automatic recognition of lens center for all kinds of lenses

- Automatic lens type recognition: single vision, bi-focal, progressive, etc.
- Accurate reading of SPH, CYL, AXIS by integrated high performance lensmeter.
- No lens needs to be marked!



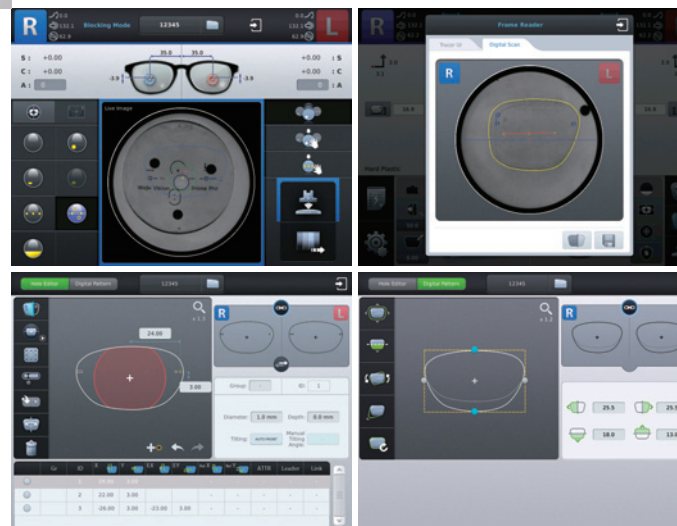
Automatic Progressive Lens Detection

Digital Scan and Hole Detection

Automatic Blocking

Acrylic Dust Cover

Drawer



Hole Editing

Digital Pattern

Extreme freedom of modifying size, axis, and shape of lens.

- The 'Digital Pattern Layout' of Huvitz KAIZER system allows users to modify lens frames with extreme ease.
- Easy rimless/semi-rimless hole editing through large and sensitive touch-screen and intuitive graphical interface menu.

Variety of supplementary features for user convenience.

- Storage drawer for lenses and blocking pads.
- Sliding dust cover for frame reader to ensure durability and precision.

KAIZER HDM-8000, in your hands, the best time-saving solution to increase your profitability!



Simultaneous lens cutting and drilling is possible by smart job manager!

- Significantly reduces the processing time by systematic data profiling algorithms.

Safety is the most important, all the time!

- Safe Automatic Door Control by movement detection sensor. Door will never move down, if your hands are in movement for lens loading and unloading.

Keep your working environment clean!

- Removable waste collector drawer keeps the driller clean at all times.

Job Manager

Job Number	Type	Reading	Blocking	Time
CONCAVE_3	Blue	CONCAVE	R L	1904-12-22 11:04:20
CONCAVE_2	Blue	CONCAVE	R L	1904-12-22 10:49:31
CONCAVE_1	Blue	CONCAVE	R L	1904-12-22 10:44:45
32345	Blue	BOTH	R L	1904-12-21 16:05:47



Drilling

Drilled lenses

Waste collector Drawer

Dynamic speed and precision in your business! The KAIZER HFR-8000 frame tracer!



16,000pts high-resolution scanning and digital filtering technology.

- Precise scanning of all metal and plastic frames.
- Binocular and monocular tracing are both available to meet users' accuracy and efficiency needs.

Perfect process of stereoscopic scan feature.

- Accurate tracing of high-curve frames with unique HUVITZ mechatronic technology

Now special frames are not challenging!

- Accurate scanning for concave shape, sharp edge, and narrow frame is very easy!

Slide cover that prevents dust accumulation.

- Keeping out dust will ensure durability and precision.



High curve frame reading



Dust Cover

Concave shape reading

KAIZER HMB-8000, The simplicity is another advantage: energy-saving and auto-sensing feature will surprise you!



Your satisfaction is guaranteed, with its compact and robust structure: streamlined functionality and intuitive graphics and energy-saving integrated features.

Compact and sleek design with luxurious feel

- Simple, and it makes your work environment look great.

Adjustable LED intensity.

- Lifetime durability LED lamp.
- Easy to mark and block even with dark-tinted lenses by brightness control function

Auto power-saving mode

- Automatic power off after confirming the marking points
- Automatic power off and sleep mode after preset time



Progressive Lens setting



White LED lamp



Brightness control knob

The best and most-suitable combination of functionality with your budget in mind!
The whole KAIZER system combination!



Type A



Type B



Type C



Type D



Type E

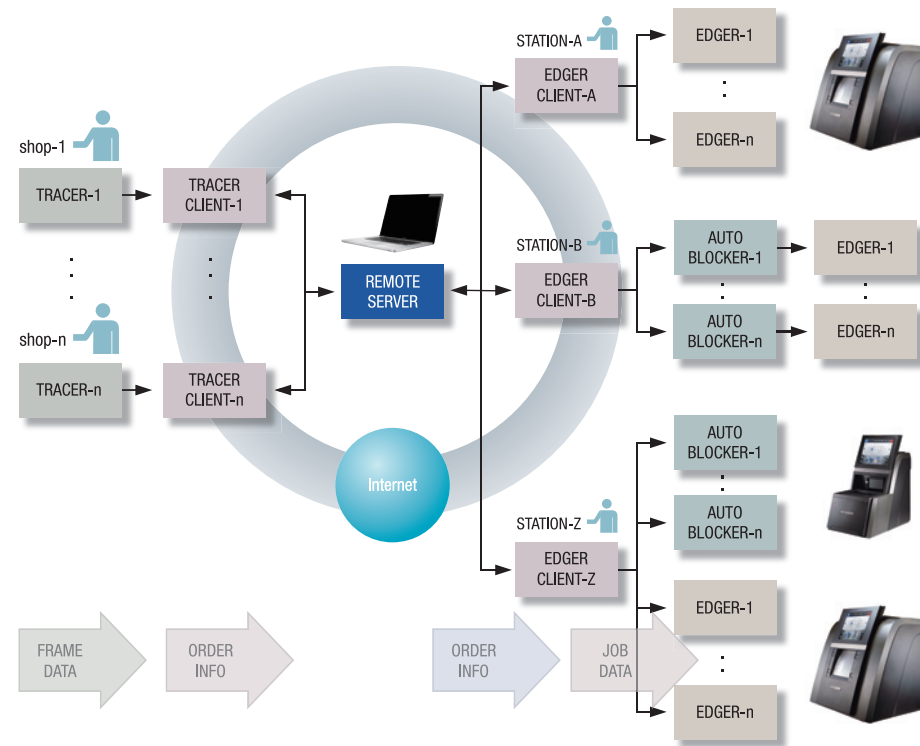


Type F

KAIZER NETWORK SOLUTIONS & SPECIFICATIONS

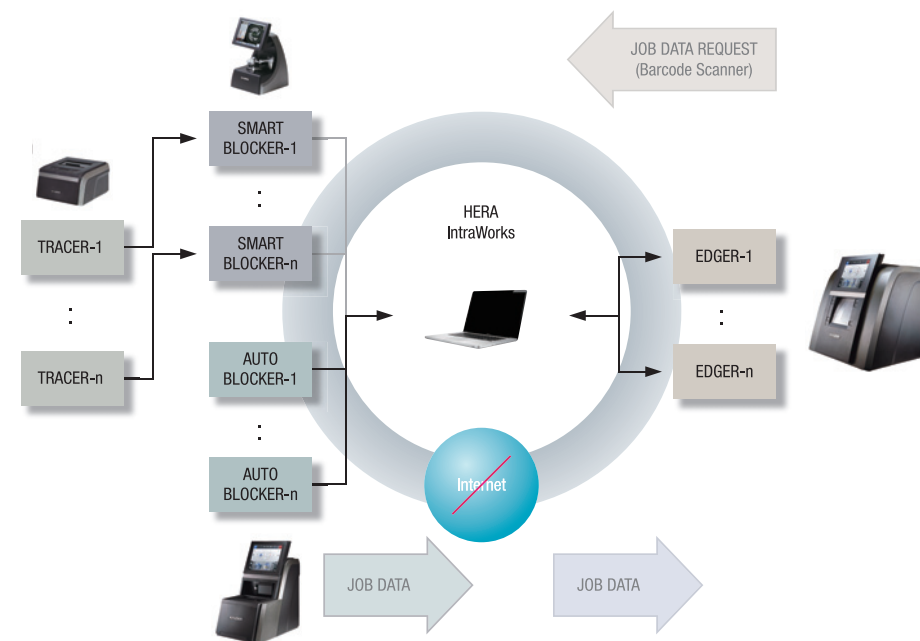
Remote Edging Solution with The Kaizer Remote Assistant

- You can enjoy the great functions of the HERA to support downloading job data to Auto Blocker device



Intra-Lab Networking Solution

- You can enjoy the data compatibility of HERA IntraWorks
- You can add export/import function to the HERA IntraWorks for frame DB migration



Edger

Lens Material	Plastic, Polycarbonate, High index plastic, Glass, Trivex
Edging Mode	Beveling (Normal, Asymmetric, Mini, Auto, Manual Mode) Flat Edging Grooving (Normal, Partial, Manual Mode) Safety Beveling Polishing Milling
Functions	Job Manager, Digital Pattern, Hole Editor, Retouch, Bevel / Groove Simulation
Utilities	LCD Tilting Automatic Edging Room Door Inside Edging Room Illumination, SD Card Storage (Memory Included) Barcode Reader (Optional)
Display	10.4 inch Color TFT LCD (1024 x 768) with Touch Screen
Edging Size	Max 90 mm Min - Flat Edging : 18.5 mm (without Safety Bevel) - Bevel Edging : 20 mm (without Safety Bevel)
Dimensions / Weight	540(W) x 472(D) x 580(H) mm / 51 kg
Power Supply	AC 100~120V / AC 200~240V 50/60 Hz
Power Consumption	1200W (110V Model), 1500W (220V Model)

Type	RPG	RPA	RPW
Wheel Type	Glass Roughing	Plastic Roughing	Wide Plastic Roughing
	Plastic Roughing	Asymmetric	
		Finishing	
		Polishing	
Lens Material		Plastic	
		Polycarbonate	
		Hi-Index	
		Trivex	
	Glass	-	-
Asymmetric Beveling	X	0	X
Semi U Beveling	X	0	X
Mini Beveling	0	0	0
Partial Grooving	0	0	0
Hybrid Grooving	0	0	0

Drill Machine

Hole Type	Hole, Slot, Notch
Hole Size	∅ 1.00~5.00 mm
Tilting Scope	Automatic, Manual (0~30°)
Hole Depth	Max 6.0 mm (0.0 mm = Through Hole)
Range of Hole Drilling	∅ 32.0~75.0 mm from Lens Rotation Axis
Slot Width	1.00 mm~5.00 mm
Slot length	Max 20.00 mm
Dimensions / Weight	193(W) x 483(D) x 342(H) mm / 14 kg
Power Supply	AC 100~240V 50/60 Hz
Power Consumption	100W

Auto Blocker

Tracing Type	Automatic 3D Binocular Tracing
Tracing Mode	Auto, Semi-Auto
Tracing Size	Frame ∅ 16.0~92.0 mm, Pattern ∅ 16.0~84.0 mm
Frame Material	Metal, Hard Plastic, Soft Plastic
Data Processing	FPD, Frame Curve, Circumference, 3D Angle Concave Shape
Lensmeter Camera	CMOS B/W 1.3M
Imaging Camera	CMOS B/W 1.3M 2x Image
Measurement	SPH : -10D~+10D, CYL: ±6D
Increment	0.01 D
Blocking Tolerance	-0.5~+0.5 mm
Axis Tolerance	±1°
Blocking Method	Automatic Blocking with Mechanical Arm
Blocking Pressure	3.0 kgf
Lens Recognition Mode	Intelligent, Auto, Manual
Lens Type Recognition	Single, Bi-focal, Progressive, 3-Dot
Layout Factors	FPD
	PD (Binocular, Monocular)
	Cyl Axis
	Bridge Size
	OH (ΔY, Mixed Height, Box Height)
	Centering Method (Box Center, Optical Center)
Edging Factors	Plastic, Polycarbonate, High Index Plastic, Glass, Trivex Bevel, Groove, Flat Edge, Polish, Safety Bevel
Functions	Job Manager, Digital Pattern, Hole Editor, Digital Scanning (Shape & Hole Recognition)
Utilities	LCD Tilting SD Card Storage (Memory Included) Barcode Reader (Optional)
Display	10.4 inch Color TFT LCD (1024 x 768) with Touch Screen
Dimensions / Weight	300(W) x 470(D) x 560(H) mm / 23 kg
Power Supply	AC 100~240V 50/60Hz
Power Consumption	75W

Frame Reader

Tracing Type	Automatic 3D Binocular Tracing
Tracing Mode	Auto, Semi-Auto
Tracing Size	Frame ∅ 16.0~92.0 mm, Pattern ∅ 16.0~84.0 mm
Frame Material	Metal, Hard Plastic, Soft Plastic
Data Processing	FPD, Frame Curve, Circumference, 3D Angle Concave Shape
Dimensions / Weight	284(W) x 320(D) x 190(H) mm / 8 kg
Power Supply	AC 100~240V 50/60 Hz
Power Consumption	32W

Manual Blocker

illumination	White LED Source Light Intensity Adjustment Automatic Power-Saving Mode
Dimensions / Weight	177(W) x 184(D) x 206(H) mm / 2 kg
Power Supply	5V DC 3.5A
Power Consumption	2.5W

Designs and details can be changed without prior notice for the purposes of improvement.